

# Bifurcation phenomena and attractive periodic solutions in the saturating inductor circuit

Michele V. Bartuccelli\*, Jonathan H.B. Deane\*, Guido Gentile†

\*Department of Mathematics, University of Surrey, Guildford, GU2 7XH, UK.

E-mails: m.bartuccelli@surrey.ac.uk, j.deane@surrey.ac.uk

†Dipartimento di Matematica, Università di Roma Tre, Roma, I-00146, Italy.

E-mail: gentile@mat.uniroma3.it

## Abstract

In this paper we investigate bifurcation phenomena, such as those of the periodic solutions, for the “unperturbed” nonlinear system  $G(\dot{x})\ddot{x} + \beta x = 0$ , with  $G(\dot{x}) = (\alpha + \dot{x}^2)/(1 + \dot{x}^2)$  and  $\alpha > 1$ ,  $\beta > 0$ , when we add the two competing terms  $-f(t) + \gamma\dot{x}$ , with  $f(t)$  a time-periodic analytic “forcing” function and  $\gamma > 0$  the dissipative parameter. The resulting differential equation  $G(\dot{x})\ddot{x} + \beta x + \gamma\dot{x} - f(t) = 0$  describes approximately an electronic system known as the saturating inductor circuit. For any periodic orbit of the unperturbed system we provide conditions which give rise to the appearance of subharmonic solutions. Furthermore we show that other bifurcation phenomena arise, as there is a periodic solution with the same period as the forcing function  $f(t)$  which branches off the origin when the perturbation is switched on. We also show that such a solution, which encircles the origin, attracts the entire phase space when the dissipative parameter becomes large enough. We then compute numerically the basins of attraction of the attractive periodic solutions by choosing specific examples of the forcing function  $f(t)$ , which are dictated by experience. We provide evidence showing that all the dynamics of the saturating inductor circuit is organised by the persistent subharmonic solutions and by the periodic solution around the origin.

## 1 Introduction

One of the most important second-order linear systems in practical applications is the non-autonomous simple harmonic oscillator, which is described by

$$L\ddot{x} + R\dot{x} + x/C = f(t), \quad (1.1)$$

with  $L$ ,  $R$  and  $C$  constants. This is the standard linear, second-order, constant coefficient ODE with nonzero right hand side. In an electronics context, the well-known inductor-resistor-capacitor circuit is described by exactly this differential equation, provided that the inductor ( $L$ ), resistor ( $R$ ) and capacitor ( $C$ ) are all independent of  $x$ , which in this case would be the charge on the capacitor. In many cases, this is an excellent approximation. However, a non-linear capacitor can easily be implemented

in practice, for instance, by using a semi-conductor diode, and the resulting nonlinear differential equation has been studied in detail in the case where  $x$  does not change sign in [5], [3]. Another practical but rather less studied nonlinear version of equation (1.1) is one in which  $R$  and  $C$  are constant but  $L$  is a function of  $\dot{x}$ . Model  $L(\dot{x})$  functions are of course based on practical experience. Practical inductors consist of a length of wire wound around a core of magnetisable material, real materials being capable of saturation (so that  $L$  is a function of  $\dot{x}$ , as will become clear) and possibly also displaying hysteresis (so that  $L$  is a function of  $\dot{x}$  and  $\ddot{x}$ ). Hence, the behaviour of real inductors can depart from the ideal, constant  $L$ . A simple and not very realistic model of saturation was studied in [9], where an even, piecewise constant  $L(\dot{x}) = L_0$  if  $|\dot{x}| < X$ ,  $L = L_1$  otherwise, with  $L_0 > L_1$ , was used. In a bid for a more faithful model of real inductors, a comparison between experiment and simulation was reported in [10], where both saturation and hysteresis effects were considered. The resulting system was described by a third order nonautonomous nonlinear ODE, which was solved numerically and compared with experiment.

In this paper, we study a model which lies between the two extremes described above: an inductor whose core saturates, this time smoothly, but which does not display hysteresis.

The rest of the paper is organised as follows. In Section 2, under appropriate assumptions and approximations, we derive and rescale the equation that we study. Such an equation appears as a perturbation of an integrable equation, whose main properties will be reviewed in Section 3. We then study the periodic solutions of the full unperturbed equation. First, in Section 4 we investigate the persistence of periodic solutions of the unperturbed system which are “in resonance” with the forcing term (the so-called subharmonic solutions). Then in Section 5 we show that the system is characterised by the presence of another periodic solution, which has the same period as the forcing and encircles the origin. More precisely it branches off the origin in the sense that it reduces to the origin when the forcing is removed. Therefore such a solution is different in a profound way from the subharmonic solutions, because it arises by bifurcation from the stable equilibrium point and not from the unperturbed periodic solutions. The periodic solution encircling the origin has a non-empty basin of attraction which becomes the entire phase space when the dissipative parameter is large enough; this will be proved in Section 6. In principle there could be other solutions relevant for the dynamics. However there is strong numerical evidence that the full dynamics is organised by the periodic solutions that we have studied analytically. In fact, the numerical simulations performed in Section 7 suggest that the union of the basins of attraction of those periodic solutions fills the entire phase space; cf. [6, 1] for similar situations. Finally, in Section 8 we draw some conclusions, and discuss some open problems and possible lines of future research.

## 2 The saturating inductor circuit ODE

The circuit under consideration is shown in figure 1 and we now derive the ODE that describes it, briefly explaining the assumptions that we make. Details of the electro-

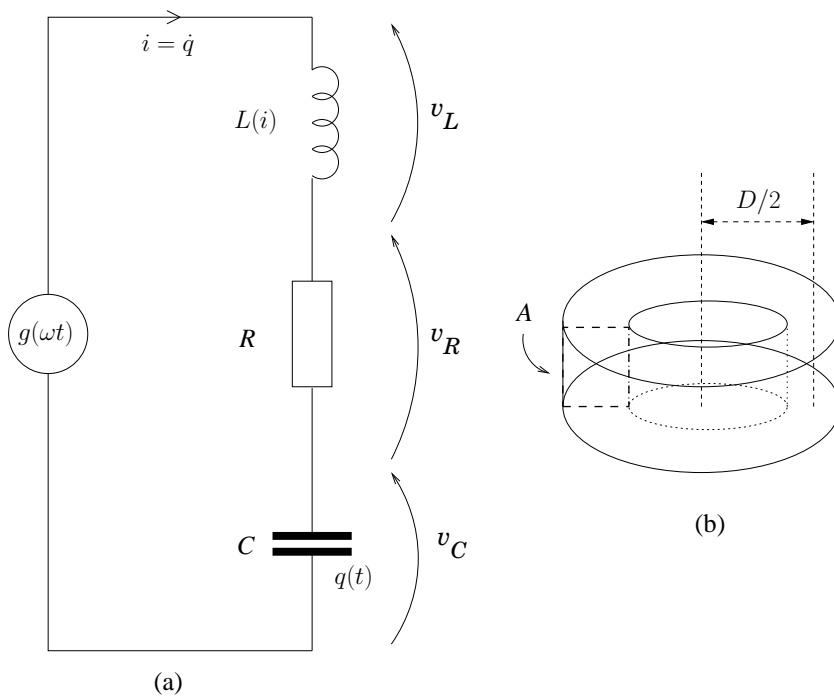


Figure 1: (a) The saturating inductor circuit driven by a voltage source  $g(\omega t)$  is described by the ODE discussed in this paper. In this diagram, the dependent variable, the capacitor charge, is  $q(t)$ ; the current,  $i(t) = \dot{q}(t)$ ;  $C$  (capacitance) and  $R$  (resistance) are constants and  $L = L(\dot{q}) = L(i)$  is the nonlinear inductance. The voltages across the inductor, resistor and capacitor are  $v_L$ ,  $v_R$  and  $v_C$  respectively. (b) The core of the saturating inductor, with cross-sectional area  $A$  and mean diameter  $D$ .

magnetism and circuit theory required can be found in [18]. Kirchhoff's voltage law states that the sum of the voltages across the components must equal the applied voltage at all times, and so  $g(\omega t) = v_L + v_R + v_C$ . The definition of capacitance states that  $v_C = q(t)/C$ , where  $q(t)$  is the capacitor charge; also by definition, the current  $i(t) = \dot{q}(t)$ ; and Ohm's law allows us to write  $v_R = i(t)R$ . Faraday's law of induction states that  $v_L = d\phi/dt$  where  $\phi$  is the magnetic flux, to be defined. To proceed further, we need to make assumptions about the geometry of the inductor core. In order that it will display saturation at relatively low currents, we assume that it is toroidal in shape, with cross sectional area  $A$  and mean diameter  $D$ , and that the inductor itself consists of  $n$  turns of wire around this core. The magnetic flux density is defined by  $B = \mu_0(H + M)$ , where  $\mu_0 = 4\pi \times 10^{-7}$  is the permeability of free space,  $H$  is the applied magnetic field and  $M$  is the magnetisation. In fact, the quantities  $B$ ,  $H$  and  $M$  are all vectors, but under the assumption that they are all parallel to each other and normal to the cross-section of the core, we shall see that we need only consider their magnitudes. The magnetic flux is then defined by

$$\phi = n \iint B dA = n\mu_0 \iint (H + M) dA = n\mu_0 A(H + M).$$

Now, Ampère's circuital law relates  $H$  to  $i$  by  $H = ni/\pi D$ , and so

$$\frac{d\phi}{dt} = \frac{di}{dt} \frac{d\phi}{di} = \ddot{q} \frac{d\phi}{di} = \frac{\mu_0 n^2 A}{\pi D} \ddot{q} \left( 1 + \frac{dM}{dH} \right). \quad (2.1)$$

We now need a model for  $M(H)$ . In the absence of hysteresis, and with weak coupling between the magnetic domains,  $M(H)$  is usually described by the Langevin function

$$M(H) = M_s [\coth(H/a) - a/H], \quad \text{where} \quad \lim_{H \rightarrow 0} M(H) = 0,$$

and where  $M_s > 0$  and  $a > 0$  are constants which depend on the core material. Now,

$$\frac{dM}{dH} = \frac{M_s}{a} \left[ 1 - \coth^2 \left( \frac{H}{a} \right) + \frac{a^2}{H^2} \right] \equiv U \left( \frac{H}{a} \right),$$

where

$$\lim_{H \rightarrow 0} \frac{dM}{dH} = \frac{M_s}{3a}, \quad \lim_{H \rightarrow \pm\infty} \frac{dM}{dH} = 0.$$

Using this in equation (2.1), and Kirchoff's voltage law, allows us to write the differential equation that describes the circuit as

$$\frac{\mu_0 n^2 A}{\pi D} \left[ 1 + U \left( \frac{n\dot{q}}{\pi D a} \right) \right] \frac{d^2 q}{dt^2} + R \frac{dq}{dt} + \frac{q}{C} = g(\omega t) \quad (2.2)$$

and all the coefficients are well-defined even when  $\dot{q} = 0$ . We now rescale time by replacing  $\omega t$  with  $t$ , and  $q$  by defining  $\omega n q(t) = \pi D a \lambda x(t)$ , with  $\lambda$  a constant to be defined, giving

$$\ddot{x} [1 + U(\lambda \dot{x})] + \gamma \dot{x} + \beta x = f(t), \quad (2.3)$$

where

$$\gamma = \frac{\pi D R}{\mu_0 n^2 \omega A}, \quad \beta = \frac{\pi D}{\mu_0 n^2 \omega^2 A C}, \quad f(t) = \frac{g(t)}{\mu_0 n \omega \lambda a A}. \quad (2.4)$$

Finally, we can usefully approximate the function  $U$  with an expression that is qualitatively similar but easier to handle analytically. From the foregoing, we have, for all  $\lambda$ , that  $\lim_{y \rightarrow \pm\infty} 1 + U(\lambda y) = 1$  and  $\lim_{y \rightarrow 0} 1 + U(\lambda y) = 1 + M_s/(3a) \equiv \alpha > 1$ . The simplest rational approximation to  $1 + U(\lambda y)$  which has the same limits (independent of  $\lambda$ ) is  $L(y) = (\alpha + y^2)/(1 + y^2)$ . Since we are free to choose  $\lambda$ , we find the value  $\lambda = \lambda_0$  that minimises

$$\begin{aligned} I(\alpha, \lambda) &= \int_0^\infty \left[ 1 + 3(\alpha - 1) \left( 1 - \coth^2(\lambda y) + 1/(\lambda y)^2 \right) - \frac{\alpha + y^2}{1 + y^2} \right]^2 dy \\ &= (\alpha - 1)^2 \int_0^\infty \left[ 3 \left( 1 - \coth^2(\lambda y) + 1/(\lambda y)^2 \right) - \frac{1}{1 + y^2} \right]^2 dy. \end{aligned}$$

Numerical computation gives the value  $\lambda_0 \approx 1.99932$ .

Hence we set  $\lambda = \lambda_0$  and using the resulting approximation for the function  $U$ , the differential equation in its final form is

$$\dot{x} = y, \quad \frac{\alpha + y^2}{1 + y^2} \dot{y} = f(t) - \gamma y - \beta x. \quad (2.5)$$

In the rest of the paper we shall be interested in investigating how the dynamics of the “unperturbed” system  $\dot{x} = y$ ,  $(\alpha + y^2)/(1 + y^2)\dot{y} = -\beta x$  will be influenced by the addition of the two competing terms  $f(t) - \gamma y$  under the assumption that they represent a “small” perturbation. We shall be able also to investigate cases far from the perturbation regime, at least when the dissipative parameter is large enough with respect to the forcing term.

### 3 The unperturbed system

Consider the ordinary differential equation (we set  $\gamma = \varepsilon C$  for notational convenience)

$$\dot{x} = y, \quad \dot{y} = -g(y)x + \frac{\varepsilon}{\beta} \left( g(y)(f(t) - Cy) \right), \quad (3.1)$$

where  $g(y) = \beta(1 + y^2)/(\alpha + y^2)$ , with  $\alpha > 1$ ,  $f(t) = f(t + 2\pi)$  is a analytic periodic function of time, and  $\varepsilon$  (small),  $C \geq 0$  are two real parameters. Without loss we can redefine our  $\varepsilon$  so as to absorb the positive constant  $\beta$ . For  $\varepsilon = 0$  our system is integrable by quadratures; in fact it has an integral of motion, which we identify with its energy, given by

$$E(x, y) = \frac{1}{\beta} \left( \frac{y^2}{2} + \frac{\alpha - 1}{2} \log(1 + y^2) \right) + \frac{x^2}{2}. \quad (3.2)$$

Note that the above system is a particular case of the following class of systems possessing an integral of motion:  $\dot{x} = y$ ,  $\dot{y} = -g(y)F(x)$ , the associated integral being given by

$$\int \frac{y}{g(y)} dy + \int F(x) dx.$$

The following result is proved in Appendix A.

**Lemma 1** *Consider the system (3.1) with  $\varepsilon = 0$ . Its phase space is filled with periodic orbits around the origin; the period  $T_0$  of these orbits is strictly decreasing as a function of the energy (3.2), and satisfies the inequalities  $2\pi/\sqrt{\beta} < T_0 < 2\pi\sqrt{\alpha/\beta}$ .*

For  $\varepsilon = 0$  the system (3.1), in the limits of small and large energy, becomes “essentially” the harmonic oscillator with frequencies  $\omega = 1/\sqrt{\alpha}$  and  $\omega = 1$  respectively. We observe that for any fixed value of the energy we have formally an infinite number of unperturbed periodic solutions parametrized by a phase shift  $t_0$ . This phase shift is irrelevant in the autonomous case ( $\varepsilon = 0$ ), but becomes very important when we add the time dependent perturbation ( $\varepsilon \neq 0$ ), because in the extended phase space  $(x, y, t)$  each “initial” phase will give rise to a different orbit. Therefore the unperturbed solution to be continued for  $\varepsilon \neq 0$  can be written in terms of the initial phase, in the form  $x_0(t) = X_0(t - t_0)$ , where  $X_0(t)$  is an unperturbed solution with the phase appropriately fixed (for instance with  $\dot{X}_0(0) = 0$ ) in order to impose some constraints on the perturbed system (see below). For practical purposes it will be more convenient to change the origin of time, by writing the unperturbed solution as  $x_0(t) = X_0(t)$  and the periodic forcing function in the form  $f(t + t_0)$ .

**Lemma 2** Consider the system (3.1) with  $\varepsilon = 0$ . The energy function (3.2) satisfies the identities  $E(\pm x, \pm y) = E(x, y)$ . The solutions  $x_0(t)$  can be chosen to be even in  $t$ , and satisfy  $x_0(t) = -x_0(t - T_0/2)$ , if  $T_0$  is the corresponding period. Furthermore they possess only odd components in their Fourier series expansion.

*Proof.* The equation (3.2) shows that the energy function is even in both variables  $(x, y)$ , namely  $E(\pm x, \pm y) = E(x, y)$ . Therefore the solutions  $(x_0(t), y_0(t))$  have reflectional symmetry with respect to both axes  $(x, y)$ . Hence giving initial conditions on the  $x$ -axis one obtains solutions  $x_0(t)$  which are even in time (similarly if one chooses initial conditions on the  $y$ -axis then the solutions are odd in time). Using this property it follows that any solution of period  $T_0$  can be chosen to be even in time, and moreover it must have the property  $x_0(t) = -x_0(t - T_0/2)$ .

To show the validity of the part concerning the Fourier spectrum, consider the Fourier series of  $x_0(t)$ , namely

$$x_0(t) = \sum_{\nu \in \mathbb{Z}} x_{0\nu} e^{i\nu\omega t}, \quad (3.3)$$

where  $\omega = 2\pi/T_0$ . The Fourier coefficients can be written as

$$\begin{aligned} T_0 x_{0\nu} &= \int_0^{T_0} dt e^{-i\nu\omega t} x_0(t) = \int_0^{T_0/2} dt e^{-i\nu\omega t} x_0(t) - \int_{T_0/2}^{T_0} dt e^{-i\nu\omega t} x_0\left(t - \frac{T_0}{2}\right) \\ &= \int_0^{T_0/2} dt e^{-i\nu\omega t} x_0(t) - e^{-i\nu\omega T_0/2} \int_0^{T_0/2} dt' e^{-i\nu\omega t'} x_0(t') \\ &= (1 - e^{-i\nu\pi}) \int_0^{T_0/2} dt e^{-i\nu\omega t} x_0(t). \end{aligned}$$

Therefore if  $\nu$  is an even number (including zero)  $x_{0,\nu} = 0$ , while if  $\nu$  is an odd number  $x_{0,\nu} \neq 0$ . ■

We now investigate the dynamics of the system when  $\varepsilon \neq 0$  (and small). In particular we are interested in studying which periodic orbits of the unperturbed system persist under the combined effect of the periodic perturbation  $f(t + t_0) = f(t + t_0 + 2\pi)$  and the dissipative term  $C\dot{x}$ ; cf. [1, 8, 15, 16, 19, 14] for related results. Notice that in order to have a periodic solution with period commensurate with  $2\pi$  we must impose a so-called resonance condition given by  $\omega = 2\pi/T_0 = p/q$ . If  $\omega$  satisfies the above condition then the perturbed periodic solution will have the period  $T = pT_0$ , during which the periodic forcing function  $f(t + t_0)$  has “rotated”  $q$  times. Notice that the phase  $t_0 \in [0, 2\pi q/p)$ . It is more convenient to consider the system

$$\dot{x} = y, \quad \dot{y} = -g(y)x + \frac{\varepsilon}{\beta} \left( g(y)(f(t) - C\dot{x}) \right), \quad \dot{t} = 1, \quad (3.4)$$

defined in the extended phase space  $(x, y, t)$ . Then for  $\varepsilon = 0$  the motion of the variables  $(x, y, t)$  is in general quasi-periodic, and reduces to a periodic motion whenever  $T_0$  becomes commensurate with  $2\pi$ . Thus in the extended phase space  $(x, y, t)$  the solution

runs on an invariant torus which is uniquely determined by the energy  $E$ ; if  $\omega = p/q$  we say that the torus is *resonant*. In general the non-resonant tori disappear under the effect of the perturbation, unless the system belongs to the class which can be analyzed by using the KAM theory. Also the resonant tori disappear, but some remnants are left: indeed usually a finite number of periodic orbits, called *subharmonic solutions*, lying on the unperturbed torus, can survive under the effect of the perturbation. If  $\omega = p/q$  we shall call  $q/p$  the *order* of the corresponding subharmonic solutions. The subharmonic solutions will be studied in Section 4.

Besides the subharmonic solutions, there are other periodic solutions which are relevant for the dynamics: indeed there is a periodic solution branching off the origin. This is a feature characteristic of forced systems in the presence of damping [2, 3, 12]. Existence and properties of such a solution will be studied in Sections 5 and 6. In particular we shall show that this periodic solution becomes a global attractor if the dissipative parameter is large enough.

## 4 Subharmonic solutions

We consider the system (3.1) with  $\varepsilon \neq 0$  and small, and we look for subharmonic solutions which are analytic in  $\varepsilon$ . First, we formally define power series in  $\varepsilon$  of the form

$$x(t) = \sum_{k=0}^{\infty} \varepsilon^k x^{(k)}(t), \quad y(t) = \sum_{k=0}^{\infty} \varepsilon^k y^{(k)}(t), \quad C = \sum_{k=0}^{\infty} \varepsilon^k C_k, \quad (4.1)$$

where the functions  $x^{(k)}(t)$  and  $y^{(k)}(t)$  are periodic with period  $T = pT_0 = 2\pi q$  for all  $k \in \mathbb{N}$ . We shall see that the functions  $x^{(k)}(t)$  and  $y^{(k)}(t)$  can be determined provided the parameters  $C_k$  are chosen to be appropriate functions of the initial phase  $t_0$ .

If we introduce the decompositions (4.1) into (3.1) and we denote with  $W(t)$  the Wronskian matrix for the unperturbed linearised system, we obtain

$$\begin{pmatrix} x^{(k)}(t) \\ y^{(k)}(t) \end{pmatrix} = W(t) \begin{pmatrix} \tilde{x}^{(k)} \\ \tilde{y}^{(k)} \end{pmatrix} + W(t) \int_0^t d\tau W^{-1}(\tau) \begin{pmatrix} 0 \\ F^{(k-1)}(\tau) \end{pmatrix}, \quad (4.2)$$

where  $(\tilde{x}^{(k)}, \tilde{y}^{(k)})$  are corrections to the initial conditions, and

$$F^{(k)}(t) = \sum_{m=0}^{\infty} \sum_{\substack{r_1, r_2 \in \mathbb{Z}_+ \\ r_1 + r_2 = m}} \frac{1}{r_1! r_2!} \frac{\partial^{r_1}}{\partial y^{r_1}} \frac{\partial^{r_2}}{\partial C^{r_2}} F(y_0, C_0, t + t_0) \times \\ \times \sum_{k_1 + \dots + k_m = k} y^{(k_1)}(t) \dots y^{(k_{r_1})}(t) C_{k_{r_1+1}} \dots C_{k_m}. \quad (4.3)$$

where  $F(y, C, t + t_0) = g(y)(f(t + t_0) - Cy)$ . Note that by construction  $F^{(k)}(t)$  depends only on the coefficients  $y^{(k')}(t)$  and  $C^{(k')}$  with  $k' \leq k$ .

We shall denote by  $(x_0, y_0)$  the solution of the unperturbed system  $\dot{x}_0 = y_0$ ,  $\dot{y}_0 = -g(y_0)x_0$ , with  $x_0$  even (hence  $y_0$  odd): this is possible by Lemma 1. The Wronskian

matrix appearing in (4.2) is a solution of the unperturbed linear system

$$\dot{W}(t) = M(t)W, \quad M(t) = \begin{pmatrix} 0 & 1 \\ -g(y_0) & -(\partial g(y_0)/\partial y)x_0 \end{pmatrix} \quad (4.4)$$

so that the matrix  $W(t)$  can be written as

$$W(t) = \begin{pmatrix} c_1 \partial x_0 / \partial E & c_2 \dot{x}_0 \\ c_1 \partial y_0 / \partial E & c_2 \dot{y}_0 \end{pmatrix}, \quad (4.5)$$

where  $c_1$  and  $c_2$  are suitable constant such that  $W(0) = \mathbb{1}$  (one easily check that  $c_1 c_2 = -\alpha$ ).

By making explicit the dependence on  $E$  of the unperturbed periodic solutions, we can write

$$x_0(t) = x_0(\omega(E)t, E) = \sum_{\nu} x_{\nu}(E) e^{i\nu\omega(E)t}, \quad (4.6)$$

so that we can write

$$\frac{\partial x_0}{\partial E} = \frac{\partial \omega(E)}{\partial E} t h(t) + b(t), \quad \dot{x}_0(t) = \omega(E) h(t),$$

where

$$h(t) = \sum_{\nu} i\nu x_{\nu}(E) e^{i\nu\omega(E)t}, \quad b(t) = \sum_{\nu} \frac{\partial x_{\nu}(E)}{\partial E} e^{i\nu\omega(E)t}.$$

Note in particular that  $h(t)$  and  $b(t)$  are, respectively, odd and even in  $t$ , so that  $\partial x_0 / \partial E$  is even in time.

Hence we have

$$\frac{\partial x_0}{\partial E} = \mu t \dot{x}_0 + b(t), \quad \mu = \frac{1}{\omega(E)} \frac{\partial \omega(E)}{\partial E},$$

where  $\mu \neq 0$  because the system is anisochronous and the derivative of the period  $dT_0(E)/dE < 0$  as shown in Lemma 1; also the functions  $h(t), b(t), \dot{x}_0(t)$  are periodic with period  $T_0$ . Notice that the lower two components of the Wronskian are the time derivatives of the upper two. Hence we can express the Wronskian as follows:

$$W(t) = \begin{pmatrix} c_1 (\mu t \dot{x}_0(t) + b(t)) & c_2 \dot{x}_0(t) \\ c_1 (\mu \dot{x}_0(t) + \mu t \ddot{x}_0(t) + \dot{b}(t)) & c_2 \ddot{x}_0(t) \end{pmatrix}. \quad (4.7)$$

By introducing (4.7) in (4.2) and using that

$$\det W(t) = c_1 c_2 \left( \dot{y}_0 \frac{\partial x_0}{\partial E} - \dot{x}_0 \frac{\partial y_0}{\partial E} \right) = -\frac{c_1 c_2}{G(y_0)} \left( x_0 \frac{\partial x_0}{\partial E} + y_0 G(y_0) \frac{\partial y_0}{\partial E} \right) = -\frac{c_1 c_2}{G(y_0)},$$

we obtain for all  $k \geq 1$

$$\begin{aligned} x^{(k)}(t) &= c_1 (\mu \dot{x}_0(t)t + b(t)) \tilde{x}^{(k)} + c_2 \dot{x}_0(t) \tilde{y}^{(k)} + (\mu \dot{x}_0(t)t + b(t)) \times \\ &\times \int_0^t d\tau G(y_0(\tau)) \dot{x}_0(\tau) F^{(k-1)}(\tau) - \dot{x}_0(t) \int_0^t d\tau G(y_0(\tau)) (\mu \dot{x}_0(\tau)\tau + b(\tau)) F^{(k-1)}(\tau), \end{aligned}$$



where  $G(y) = (\alpha + y^2)/(\beta(1 + y^2))$ ; a similar expression can be written for the component  $y^{(k)}(t) = \dot{x}^{(k)}(t)$ . After some manipulation we obtain

$$x^{(k)}(t) = c_1 \left( \mu t \dot{x}_0(t) \tilde{x}^{(k)} + b(t) \tilde{x}^{(k)} \right) + c_2 \dot{x}_0(t) \tilde{y}^{(k)} + b(t) \int_0^t d\tau G(y_0(\tau)) \dot{x}_0(\tau) F^{(k-1)}(\tau) - \dot{x}_0(t) \int_0^t d\tau G(y_0(\tau)) b(\tau) F^{(k-1)}(\tau) + \mu \dot{x}_0(t) \int_0^t d\tau \int_0^\tau d\tau' G(y_0(\tau')) \dot{x}_0(\tau') F^{(k-1)}(\tau').$$

For notational convenience let us put  $\Phi^{(k-1)}(t) = G(y_0(t)) \dot{x}_0(t) F^{(k-1)}(t)$ ,  $\mathcal{F}^{(k-1)}(t) = \int_0^t d\tau \Phi^{(k-1)}(\tau)$  and  $\Psi^{(k-1)}(t) = G(y_0(t)) b(t) F^{(k-1)}(t)$ . Then we obtain a periodic solution of period  $T = pT_0 = 2\pi q$  if, to any order  $k \in \mathbb{N}$ , one has

$$\langle \Phi^{(k-1)} \rangle := \frac{1}{T} \int_0^T d\tau \Phi^{(k-1)}(\tau) = 0, \quad c_1 \tilde{x}^{(k)} = \frac{\langle \Psi^{(k-1)} \rangle}{\mu} - \langle \mathcal{F}^{(k-1)} \rangle, \quad (4.8)$$

where, given any  $T$ -periodic function  $H$  we denote its mean by  $\langle H \rangle$ . Also recall that  $\mu \neq 0$  and  $c_1 \neq 0$ .

The parameters  $\tilde{y}^{(k)}$  are left undetermined, and we can fix them arbitrarily, as the initial phase  $t_0$  is still a free parameter. For instance we can set  $\tilde{y}^{(k)} = 0$  for all  $k \in \mathbb{N}$  or else we can define  $\tilde{y}^{(k)} = \tilde{y}^{(k)}(t_0)$  for  $k \in \mathbb{N}$ , with the values  $\tilde{y}^{(k)}(t_0)$  to be fixed in the way which turns out to be most convenient [14].

Thus, under the restrictions (4.8) we have that for all  $k \geq 1$

$$x^{(k)}(t) = c_1 b(t) \tilde{x}^{(k)} + c_2 \dot{x}_0(t) \tilde{y}^{(k)} + b(t) \int_0^t d\tau \Phi^{(k-1)}(\tau) + \int_0^t d\tau \left( \Psi^{(k-1)}(\tau) - \langle \Psi^{(k-1)} \rangle \right) + \mu \dot{x}_0(t) \int_0^t d\tau \left( \mathcal{F}^{(k-1)}(\tau) - \langle \mathcal{F}^{(k-1)} \rangle \right) \quad (4.9)$$

is a periodic function of time. Hence we must prove that the first condition in (4.8) can be fulfilled at all orders  $k \geq 1$ ; the second condition just gives a prescription how to fix the parameters  $\tilde{x}^{(k)}$ .

For  $k = 1$  the condition on the zero average, in terms of the Melnikov integral (notice that  $G(y_0(\tau))g(y_0(\tau)) = 1$ )

$$M(t_0, C_0) := \int_0^T d\tau G(y_0(\tau)) \dot{x}_0(\tau) F^{(0)}(\tau) = \int_0^T d\tau \dot{x}_0(\tau) [-C_0 \dot{x}_0(\tau) + f(\tau + t_0)]$$

gives  $M(t_0, C_0) = 0$ , and we can choose  $C_0 = C_0(t_0)$  so that this holds because

$$\frac{\partial M(t_0, C_0(t_0))}{\partial C_0} = - \int_0^T d\tau [\dot{x}_0(\tau)]^2 := -D \neq 0$$

for all  $t_0 \in [0, 2\pi q/p)$ .

For  $k = 2$  the condition reads (recall that  $\dot{x}_0 = y_0$ )

$$C_1 = \frac{1}{D} \Gamma^{(1)}(C_0, x_0, x^{(1)}, y_0, y^{(1)}, t_0) = \frac{1}{D} \int_0^T d\tau G(y_0(\tau)) \dot{x}_0(\tau) \times \\ \times \left[ -C_0 y^{(1)}(\tau) \dot{x}_0(\tau) g'(y_0(\tau)) x^{(1)}(\tau) \dot{x}_0(\tau) y^{(1)}(\tau) - \frac{g''(y_0(\tau))}{2} x_0(\tau) \dot{x}_0(\tau) (y^{(1)})^2(\tau) + g'(y_0(\tau)) \dot{x}_0(\tau) y^{(1)}(\tau) f(\tau + t_0) \right],$$

where the primes denote differentiation with respect to  $y$ . For higher values of  $k$ , in order to satisfy the first condition in (4.8) we must choose

$$C_k = \frac{1}{D} \Gamma^{(k)}(C_0, \dots, C_{k-1}, x_0, \dots, x^{(k)}, y_0, \dots, y^{(k)}, t_0), \quad (4.10)$$

where  $\Gamma^{(k)}$  can be proved, by induction, to be a well-defined periodic function depending on the coefficients  $C_0, \dots, C_{k-1}, x_0, \dots, x^{(k)}, y_0, \dots, y^{(k)}$ . Therefore we conclude that if we set  $C_0 = C_0(t_0)$  and, for all  $k \geq 1$ , we choose  $\tilde{y}^{(k)} = y^{(k)}(t_0)$ ,  $\tilde{x}^{(k)}$  according to the second condition in (4.8) and  $C_k = C_k(t_0)$  according to (4.10), we obtain that in the series expansions (4.1) the coefficients  $x^{(k)}(t)$  and  $y^{(k)}(t)$  are well-defined periodic functions of period  $T$ . All of this of course makes sense if the series expansions (4.1) converge; this can be seen by showing that the coefficients admit bounds of the form  $|x^{(k)}(t)| < \delta^k$  for some positive constant  $\delta$ ; hence by taking  $\varepsilon$  small enough and  $C = C(\varepsilon, t_0)$  as a function of  $t_0$  according to (4.10) it follows that the series converges to a periodic function with period  $T = T_0 p$ , analytic in  $t$  and  $\varepsilon$ . The strategy for showing the convergence of the series is essentially the same as that explained in [11, 14], and all the details can be found in these references. So the formal power series converges for  $|\varepsilon| < \varepsilon_0 = \delta^{-1}$ . For fixed  $\varepsilon \in (-\varepsilon_0, \varepsilon_0)$  we shall find the range allowed for  $C$  by computing the supremum and the infimum, for  $t_0 \in [0, 2\pi)$ , of the function  $t_0 \rightarrow C(\varepsilon, t_0)$ . The bifurcation curves will be defined in terms of the function  $C(\varepsilon, t_0)$  as

$$\gamma_1(\varepsilon) = \varepsilon \sup_{t_0 \in [0, 2\pi)} C(\varepsilon, t_0), \quad \gamma_2(\varepsilon) = \varepsilon \inf_{t_0 \in [0, 2\pi)} C(\varepsilon, t_0). \quad (4.11)$$

These bifurcation curves divide the parameter plane  $(\varepsilon, \gamma)$  into two disjoint sets such that only inside the region delimited by the bifurcation curves are there subharmonic solutions; the region of existence contain the real  $\varepsilon$ -axis. For more details on this point see [14].

We are now in a position to summarise the above discussion by stating the following theorem which is an adaptation of Theorem 5 of [14].

**Theorem 1** *Consider the system (3.1). There exist  $\varepsilon_0 > 0$  and two continuous functions  $\gamma_1(\varepsilon)$  and  $\gamma_2(\varepsilon)$ , with  $\gamma_1(0) = \gamma_2(0)$ ,  $\gamma_1(\varepsilon) \geq \gamma_2(\varepsilon)$  for  $\varepsilon \geq 0$  and  $\gamma_1(\varepsilon) \leq \gamma_2(\varepsilon)$  for  $\varepsilon \leq 0$ , such that (3.1) has at least one subharmonic solution of period  $2\pi q$  for  $\gamma_2(\varepsilon) \leq \varepsilon C \leq \gamma_1(\varepsilon)$  when  $\varepsilon \in (0, \varepsilon_0)$  and for  $\gamma_1(\varepsilon) \leq \varepsilon C \leq \gamma_2(\varepsilon)$  when  $\varepsilon \in (-\varepsilon_0, 0)$ .*

The above theorem applies for any analytic  $2\pi$ -periodic forcing function of time; so, provided that the integers  $p, q$  are relatively prime, it follows that generically any resonant torus of the system (3.1) possesses subharmonic solutions of order  $q/p$ . Naturally if we choose a particular forcing function with special properties, then in turn this will influence the set of possible subharmonic solutions. For example if we take the function  $f(t) = \sin t$  then for dissipation large enough — that is for  $\gamma = O(\varepsilon)$  — the only existing subharmonic solutions are those with frequency  $\omega = 1/(2k + 1)$  with  $k$  any positive integer. This can be seen as follows. The solutions of the unperturbed system have odd components only in their Fourier representation; moreover we know

that to first order the Melnikov condition  $M(t_0, C_0) = 0$  must be satisfied. Hence we can choose

$$C_0(t_0) = \frac{\int_0^T d\tau \dot{x}_0(\tau) f(\tau + t_0)}{\int_0^T d\tau [\dot{x}_0(\tau)]^2}, \quad (4.12)$$

which is well defined because the denominator is non zero; hence by computing the integral in the numerator of (4.12) by using the Fourier representations of  $\dot{x}_0$  and  $f(t) = \sin t$  and by taking the zero Fourier component of their product one can see that the only possible frequencies are of the type  $\omega = 1/(2k + 1)$ ; see [1] for details. We are implicitly assuming that the integral  $\int_0^T d\tau \dot{x}_0(\tau) f(\tau + t_0)$  is non-zero; this must be checked (either analytically or numerically), because if it happens to be zero then we have to go to higher orders until we find a  $k > 1$  such that

$$C_k = \frac{1}{\int_0^T d\tau [\dot{x}_0(\tau)]^2} \Gamma^{(k)}(C_0, \dots, C_{k-1}, x_0, \dots, x^{(k)}, y_0, \dots, y^{(k)}, t_0) \neq 0. \quad (4.13)$$

Other subharmonic solutions appear only for much smaller values of the dissipative parameter, that is for  $\gamma = O(\varepsilon^p)$ , with  $p > 1$ . Again we refer to [1, 14] for further details.

The subharmonic solutions turn out to be attractive. The numerical analysis performed in Section 7 gives evidence that, at least for small values of the perturbation parameter  $\varepsilon$ , all trajectories in phase space are eventually attracted either to some subharmonic solution or to the periodic solution which will be investigated in Section 5. Notice that this situation is different from the kind of problem studied in [20]: first of all our unperturbed system is strongly nonlinear; moreover, the limit cycles described by the attractive periodic solutions are generated by the perturbation itself, so that the problem does not consist in studying the persistence of the self-sustained limit cycle.

## 5 Periodic solution branching off the origin

In this section we wish to investigate the periodic solution which originates from the zero solution in the presence of the periodic forcing function  $f(t) = f(t + 2\pi)$ . For this it is more convenient to write our system as follows:

$$\dot{x} = y, \quad \dot{y} = -g(y)x - \gamma g(y)\dot{x} + \varepsilon g(y)f(t), \quad (5.1)$$

where  $g(y) = \beta(1 + y^2)/(\alpha + y^2)$ , and again the constant  $\beta$  has been absorbed into the constants  $\varepsilon$  and  $\gamma$ .

The following result will be proved.

**Theorem 2** *Consider the system (5.1), and assume that  $Q_0 = \min_{n \in \mathbb{N}} |n^2 - \alpha/\beta| \neq 0$ . There exists  $\varepsilon_0 \propto \max\{\gamma, Q_0\}$  such that for  $|\varepsilon| < \varepsilon_0$  the system (5.1) admits a periodic solution  $x_0(t)$  with the same period as the forcing, which describes a closed curve  $\mathcal{C}$  of diameter  $O(\varepsilon/\varepsilon_0)$  around the origin. Moreover for any value of  $\varepsilon$  there exists  $\gamma_0 > 0$  such that for  $\gamma > \gamma_0$  the periodic solution  $x_0(t)$  describes a global attractor.*

The idea is to expand the periodic solution around the origin and then to use a similar strategy to the one of the previous section. Thus we have

$$x(t) = \sum_{k=1}^{\infty} \varepsilon^k x^{(k)}(t), \quad y(t) = \sum_{k=1}^{\infty} \varepsilon^k y^{(k)}(t), \quad g(y) = \sum_{k=0}^{\infty} \frac{1}{k!} \frac{d^k g}{dy^k}(0) y^k; \quad (5.2)$$

notice that the dissipative parameter  $\gamma$  is now included in the “unperturbed” system and therefore it is (in general) not necessarily small. We now introduce the decompositions (5.2) into (5.1) and we perform a similar analysis to that of Section 5. To first order in  $\varepsilon$  we obtain (remember that the zero order solution is the origin)

$$\ddot{x}^{(1)} + g(0) \left( x^{(1)} + \gamma \dot{x}^{(1)} \right) - g(0) f(t) = 0, \quad (5.3)$$

where  $g(0) = \beta/\alpha$ . This equation is linear non-homogeneous and its time-asymptotic solution (obtained by setting to zero the transient non-periodic part which decays exponentially in time) has Fourier coefficients

$$x_{\nu}^{(1)} = \frac{g(0) f_{\nu}}{g(0)(1 + i\gamma\nu) - \nu^2}. \quad (5.4)$$

In particular it has the same period as  $f$ . Notice that the first order solution  $x^{(1)}(t)$  has the same average as the forcing function  $f(t)$  (as it should). It is now instructive to compute the second order in  $\varepsilon$  and then the  $k$ -th order, because at second order one can already see the general properties of the structure of the solution at any order. By equating powers of  $\varepsilon^2$  we obtain

$$\ddot{x}^{(2)} + g(0) \left( x^{(2)} + \gamma \dot{x}^{(2)} \right) - g'(0) \left( \dot{x}^{(1)} f(t) - x^{(1)} \dot{x}^{(1)} - \gamma (\dot{x}^{(1)})^2 \right) = 0, \quad (5.5)$$

which can be easily solved in Fourier space.

By inspecting the structure of equation (5.1) one can see that at any order  $k$  the linearised part is the same – compare for instance (5.3) with (5.5), – and the perturbation is formed of terms which are periodic functions having the same period as the forcing term  $f(t)$ ; hence the structure of the equation at order  $k$  has the form

$$\ddot{x}^{(k)} + g(0) \left( x^{(k)} + \gamma \dot{x}^{(k)} \right) = P^{(k)}(x^{(1)}, \dots, x^{(k-1)}, y^{(1)}, \dots, y^{(k-1)}, \gamma), \quad (5.6)$$

where the function  $P^{(k)}$  is a periodic function having the same period as the forcing term  $f(t)$ ; hence, by writing

$$x^{(k)}(t) = \sum_{\nu \in \mathbb{Z}} x_{\nu}^{(k)} e^{i\nu t},$$

$$P^{(k)}(x^{(1)}(t), \dots, x^{(k-1)}(t), y^{(1)}(t), \dots, y^{(k-1)}(t), \gamma) = \sum_{\nu \in \mathbb{Z}} P_{\nu}^{(k)} e^{i\nu t}, \quad (5.7)$$

we find that the Fourier coefficients  $x_{\nu}^{(k)}$  are given by

$$x_{\nu}^{(k)} = \frac{g(0) P_{\nu}^{(k)}}{g(0)(1 + i\gamma\nu) - \nu^2}, \quad (5.8)$$

according to (5.6). Notice that  $P_\nu^{(k)}$  depends on the coefficients  $x_{\nu'}^{(k')}$ , with  $k' < k$  and  $\nu' \in \mathbb{Z}$ , so that it is a well-defined periodic function (as can be checked by induction). The explicit expression for  $P_\nu^{(k)}$  can be found in Appendix B.

The convergence of the perturbation series (5.2) can be discussed as in the references [11, 14] quoted in the previous sections. The presence of the factor  $\gamma$  appearing in the denominator of (5.8) implies that the corresponding radius of convergence in  $\varepsilon$  grows linearly in  $\gamma$ . More precisely, by iterating (5.8) for every  $k$  down to  $k = 1$ , one finds that, uniformly in  $t$ ,  $|x^{(k)}(t)| \leq A(B/Q(\gamma))^{k-1}$ , where  $A$  and  $B$  are constant which depends upon the functions  $g(y)$  and  $f(t)$ , but not on  $\gamma$ , and  $Q(\gamma) = \max\{g(0)\gamma, Q_0\}$ , with  $Q_0 = \min_{n \in \mathbb{N}} |g(0) - n^2|$ ; cf. Appendix B. Therefore by looking at the power series expansion (5.2) one sees that by choosing  $\varepsilon$  judiciously the series converges. The radius of convergence becomes smaller with decreasing  $\gamma$  up to a threshold value proportional to  $1/Q_0 = 1/\min_{n \in \mathbb{N}} |n^2 - \beta/\alpha|$ , below which it remains constant. For  $\gamma = 0$  we can choose  $Q_0/B$  as the radius of convergence of the power series, provided  $n^2 - \beta/\alpha \neq 0$  (absence of resonances). Moreover, under this hypothesis, for any fixed  $\varepsilon$  — not necessarily small — we have that for  $\gamma$  large enough, say for  $\gamma > \gamma_0$ , there is a periodic solution  $x_0(t)$  encircling the origin with the same period as the forcing. We shall see in the next section that there exists  $\gamma_1 \geq \gamma_0$  such that for  $\gamma > \gamma_1$  the solution  $x_0(t)$  describes a global attractor.

## 6 Global attraction to the periodic solution encircling the origin

In this section we wish to prove that if the dissipative parameter  $\gamma > 0$  is large enough then every initial condition will evolve so as to tend asymptotically to the periodic solution encircling the origin, whose existence was proved in the previous section. We start with the perturbed equation in the form

$$G(\dot{x}) \ddot{x} + x + \gamma \dot{x} - f(t) = 0, \quad (6.1)$$

where  $G(y) = (\alpha + y^2)/(\beta(1 + y^2))$ , and the parameter  $\varepsilon$  (arbitrary: cf. the comments at the end of the previous section) has been absorbed into the forcing function  $f(t)$ . The strategy we follow is to split the solution  $x(t) = x_0(t) + \xi(t)$ , where  $x_0(t)$  satisfies (6.1). Thus we must prove that  $\xi(t) \rightarrow 0$  as time goes to infinity. By introducing  $x(t) = x_0(t) + \xi(t)$  into (6.1) and simplifying the terms satisfied by the periodic solution, we obtain the equation

$$G(\dot{x}_0 + \dot{\xi})(\ddot{x}_0 + \ddot{\xi}) - G(\dot{x}_0)\ddot{x}_0 + \gamma\dot{\xi} + \xi = 0. \quad (6.2)$$

We write it as

$$\dot{\xi} = y, \quad \dot{y} = -g(\dot{x}_0 + \dot{\xi}) \left[ -\xi - \gamma\dot{\xi} - \left( G(\dot{x}_0 + \dot{\xi}) - G(\dot{x}_0) \right) \ddot{x}_0 \right], \quad (6.3)$$

where as usual  $g(\dot{x}_0 + \dot{\xi}) = 1/G(\dot{x}_0 + \dot{\xi})$ . So we have to prove the following result.

**Lemma 3** Consider the equation (6.3) with  $x_0(t)$  the periodic solution encircling the origin. Then if the dissipative parameter  $\gamma > 0$  is large enough all trajectories in phase space converge toward the origin asymptotically in time.

*Proof.* By using the Liouville-like transformation [4]

$$\tau = \int_0^t dt \sqrt{g(\dot{x}_0 + \dot{\xi})}$$

we first remove the time-dependence from the coefficient of  $\xi$ . We obtain:  $\dot{\xi} = \sqrt{g}\xi'$  and  $\ddot{\xi} = g\xi'' + \xi'g'/2$ , where the prime denotes the derivative with respect to the variable  $\tau$ . Substituting and simplifying we get

$$\xi' = y, \quad y' = -\xi - \left( \gamma\sqrt{g} + \frac{g'}{2g} \right) \xi' - \left( G(\dot{x}_0 + \dot{\xi}) - G(\dot{x}_0) \right) \ddot{x}_0. \quad (6.4)$$

By defining the Hamiltonian for the harmonic oscillator by  $H = (\xi^2 + y^2)/2$  one can see that  $H' = -\Gamma y^2 - Fy$ , where  $\Gamma = \gamma\sqrt{g} + g'/(2g)$  and  $F = (G(\dot{x}_0 + \dot{\xi}) - G(\dot{x}_0))\ddot{x}_0$ . Now one can see that we can estimate  $|G(\dot{x}_0 + \dot{\xi}) - G(\dot{x}_0)| \leq L|y|$  with  $L$  a positive constant of order  $1/\gamma$ . The last property follows, when explicitly estimating  $L$ , from the fact that  $x_0, \dot{x}_0, \ddot{x}_0$  are of order  $1/\gamma$  (see (5.4)). Then one finds  $H' \leq -y^2(\Gamma - L/\Gamma) \leq 0$  for every  $(\xi, y)$ . Moreover  $H' = 0$  only on the  $y$ -axis provided that  $\gamma$  is large enough. So we are in the hypotheses of the theorem of Barbashin-Krasovskiy [17] and therefore we can conclude that if  $\gamma$  is large enough so as to have  $\gamma\sqrt{g} + g'/2g > 0$  and  $\Gamma - L/\Gamma > 0$  it follows that the origin is asymptotically stable and it attracts all the solutions for every initial condition in phase space. This completes the proof of the lemma. ■

## 7 Numerical simulations

We now report on some numerical computations which illustrate Theorems 1 and 2 by considering a special case of equation (2.5) with  $f(t) = A \sin t$ , and choosing  $A = 1.2$ ,  $\alpha = 40$ ,  $\beta = 1$  and  $\gamma = 0.003$ . Note that (2.5) corresponds to (3.1) with  $\varepsilon = 1$ . Technically Theorems 1 and 2, for fixed  $\gamma$ , have been proved for values of  $\varepsilon$  relatively small so as to be sure of the convergence of the power series that arise. However it is very time consuming to obtain basin of attraction pictures for small values of the dissipative parameter  $\gamma = \varepsilon C$ . Hence, we have compromised by verifying, within the limitations of finite precision and time numerical computations, that only attracting periodic solutions having periods  $2\pi n$  for  $n = 1, 3$  and  $5$  exist, for (3.1) with  $\varepsilon = 1$ ,  $\varepsilon = 0.1$  and  $\varepsilon = 0.01$ . Only in the case  $\varepsilon = 1$  have we computed the actual basins of attraction of each of these solutions — see figure 2. The figure shows solutions with periods  $2\pi n$  for  $n = 1$  (left),  $n = 3$  (middle) and  $n = 5$  (right). Below these are the corresponding basins of attraction. These were computed in the obvious way — by numerically integrating the differential equation starting from a set of initial conditions on a  $200 \times 200$  grid, and in each case, after allowing the transient to decay sufficiently, deciding which solution has been reached. Of the 40000 pixels in the figure, 17335 correspond to the  $n = 1$  solution,

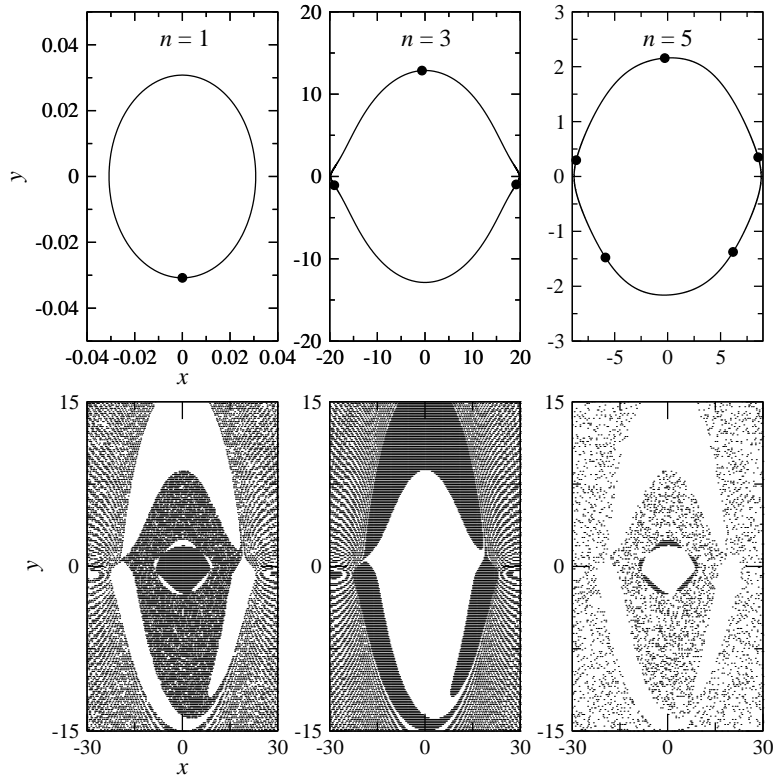


Figure 2: Numerical confirmation of Theorem 1 for  $f(t) = A \sin t$ ,  $\alpha = 40$ ,  $\beta = 1$ ,  $A = 1.2$ ,  $\gamma = 0.003$  and  $\text{eps} = 1$ . The top row shows solutions corresponding to  $n = 1$  (left),  $n = 3$  (middle) and  $n = 5$  (right); note the different scales. The filled circles show where  $f(t) = 0$ ,  $f > 0$ . The bottom row shows the basins of attraction of each of the periodic solutions.

18718 to  $n = 3$  and 3947 to  $n = 5$ . Hence, all 40000 initial conditions considered lead to one of only these three solutions.

This is in accordance with the analytical results of the previous sections. Lemma 1 implies that subharmonic solutions are possible only corresponding to periods  $2\pi q$  with  $q \in (1, \sqrt{\alpha}) = (1, \sqrt{40})$ . Furthermore,  $q$  is an odd integer, because of Lemma 2 (cf. the discussion after Theorem 1), so for these parameters, it can only be 3 or 5. We also need to check that  $\gamma$  is below the maximum of  $C_0(t_0)$  as defined in equation (4.12). For  $f(t) = A \sin t$  one finds  $C_0(t_0) = R(q) \cos t_0$ , with  $R(q)$  a constant depending on  $q$ . Carrying out the implied integrations numerically, we find that  $R(3) \approx -0.02113$  and  $R(5) \approx 0.05174$ , while (for  $\varepsilon = 1$ ) one has  $C = \gamma = 0.003$ . A similar scenario has been checked to arise for  $\gamma = 0.015$  (and the same values of the other parameters).

Besides these subharmonic solutions, there is also the periodic solution branching off the origin. Note that in the case investigated one has  $Q_0 = \min_{n \in \mathbb{N}} |n^2 - \beta/\alpha| = 39/40 \neq 0$ , so that we are far from resonances, and Theorem 2 applies.

The numerical results show that these three periodic solutions attract all trajectories (at least for initial data not too far from the origin).

## 8 Discussion and Conclusion

In this paper we have discussed various properties of the solutions of a nonlinear ODE with periodic forcing, in which the nonlinearity consists, in a mechanical analogy, of a velocity-dependent mass, the restoring force and dissipation being linear. The ODE arises as a model of an electronic circuit containing an inductor whose core saturates. The importance of this circuit is that it is very simple, consisting of only three electronic components, and yet for certain values of the parameters can display chaotic behaviour. Previous studies made use of various simplified models of the saturating inductor: for instance, by using a piecewise constant approximation to the function  $g(y)$  and neglecting hysteresis effects [9]; or by using a more realistic model including hysteresis effects (so that  $g$  depends on  $y$  and  $\dot{y}$ ) [10]. The latter results in a third-order nonautonomous ODE [10]. The ODE studied in this paper is in between these two models, as it still neglects hysteresis but uses a smooth — more realistic — function for the magnetisation.

In our analysis, we considered first the unperturbed version of the system in which dissipation and forcing were absent, and showed that here, only periodic solutions are displayed and their period is a monotonically decreasing function of the energy. When the perturbation is present, we have proved the existence of subharmonic solutions — that is solutions whose periods are rational multiples of the period of the forcing — and additionally, of a periodic solution with the same period as the forcing, the latter becoming a global attractor in the presence of sufficient dissipation. Numerical computations have been carried out to illustrate this behaviour and show the relevance of these solutions for the dynamics.

The main limitation in our model is the fact that we neglect hysteresis. On the other hand, as mentioned above, taking it into account leads to a much more complicated system, and application of the analysis techniques used here, at best, would require nontrivial generalisation. It would be interesting to investigate in a real circuit whether hysteresis can be really neglected for certain inductor core materials. In general the results presented in [10] show that hysteresis produces a distortion of the periodic solutions studied in this paper. Moreover for larger values of the perturbation parameter new bifurcation phenomena appear (such as period doublings), and also chaos. An analytical description of this behaviour would be highly desirable, but would require dealing with a non-perturbative regime: the mathematics becomes much more involved and new ideas are necessary.

### A Proof of Lemma 1

In this appendix we prove Lemma 1, namely that the periodic orbits of the system  $G(\dot{x})\ddot{x} + x = 0$  have decreasing period  $T_0 = T_0(E)$  as a function of the energy  $E$  and  $2\pi \leq T_0(E) \leq 2\pi\sqrt{\alpha}$  with  $\alpha > 1$ . In fact let

$$V(y) = \frac{1}{\beta} \left( \frac{y^2}{2} + \frac{\alpha - 1}{2} \log(1 + y^2) \right),$$



so that we can set  $E = x^2/2 + V(y)$ . Then by using the symmetry in  $x$  and  $y$  of our system, we obtain that the period as a function of the energy is given by

$$\frac{\sqrt{2}T_0(E)}{4} = T(E) = \int_0^{y_E} \frac{V'(y)dy}{y\sqrt{E-V(y)}},$$

where of course we must have  $E = V(y_E)$ . We wish to show that the derivative  $dT(E)/dE < 0$  for all  $E > 0$ . We have

$$\begin{aligned} \frac{dT(E)}{dE} &= \lim_{\varepsilon \rightarrow 0} \left( -\frac{1}{2} \int_0^{y_E} \frac{V'(y)}{y} (E - V(y) + i\varepsilon)^{-\frac{3}{2}} dy + \frac{V'(y)y'_E}{y\sqrt{E-V(y)+i\varepsilon}} \Big|_{y=y_E} \right) \\ &= \lim_{\varepsilon \rightarrow 0} \left( -\frac{1}{2E} \int_0^{y_E} \frac{V'(y)dy}{y\sqrt{E-V(y)+i\varepsilon}} - \frac{1}{2E} \int_0^{y_E} \frac{V'(y)V(y)}{y(E-V(y)+i\varepsilon)^{3/2}} dy \right. \\ &\quad \left. + \frac{V'(y)y'_E}{y\sqrt{E-V(y)+i\varepsilon}} \Big|_{y=y_E} \right) = -\frac{T}{2E} + \frac{1}{2E} \int_0^{y_E} \left( \frac{2V(y)}{y} \right)' \frac{dy}{\sqrt{E-V(y)}} \\ &\quad + \lim_{\varepsilon \rightarrow 0} \left( -\frac{1}{2E} \frac{2V(y)}{y\sqrt{E-V(y)+i\varepsilon}} \Big|_0^{y=y_E} + \frac{V'(y)y'_E}{y\sqrt{E-V(y)+i\varepsilon}} \Big|_{y=y_E} \right), \end{aligned}$$

where the prime denotes derivative with respect to  $y$  (except for  $y'_E = dy_E/dE$ ), and we have used that  $V'(y_E)y'_E = 1$  and

$$\frac{V'(y)V(y)}{y} (E - V(y))^{-3/2} = \frac{2V(y)}{y} \left[ (E - V(y))^{-1/2} \right]'$$

By computing the integrated terms and simplifying we finally obtain

$$\frac{dT(E)}{dE} = -\frac{1}{2E} \int_0^{y_E} \frac{dy}{\sqrt{E-V(y)}} \left( \frac{2V(y) - yV'(y)}{y^2} \right).$$

Hence if we show that the function

$$f(y) = 2V(y) - yV'(y) = \frac{(\alpha - 1)}{\beta} \left( \log(1 + y^2) - \frac{y^2}{1 + y^2} \right)$$

is positive for positive  $y$ , then it follows that  $dT(E)/dE < 0$ . But this can be seen by computing its derivative

$$f'(y) = \frac{(\alpha - 1)}{\beta} \frac{2y^3}{(1 + y^2)^2} > 0$$

for every  $y > 0$ . Also  $f(0) = 0$  and therefore  $dT(E)/dE < 0$ . What remains to show is that the period goes to the two limits  $2\pi\sqrt{\alpha/\beta}$  and  $2\pi/\sqrt{\beta}$  as the energy goes to zero and infinity respectively. Let us start by showing that the period  $T_0(E) \rightarrow 2\pi\sqrt{\alpha/\beta}$  as the energy  $E \rightarrow 0$ . We know that

$$T_0(E) = \frac{4}{\sqrt{2}} \int_0^{y_E} \frac{\alpha + y^2}{\beta(1 + y^2)} \frac{dy}{\sqrt{E - V(y)}}.$$

By putting  $z = y\sqrt{\frac{\alpha}{2\beta E}}$  we obtain

$$\begin{aligned}\lim_{E \rightarrow 0} T_0(E) &= \lim_{E \rightarrow 0} \frac{4}{\sqrt{2}} \int_0^{yE} \frac{\alpha + y^2}{\beta(1 + y^2)} \frac{dy}{\sqrt{E - V(y)}} \\ &= \lim_{E \rightarrow 0} \frac{4}{\sqrt{\alpha\beta}} \int_0^{1+O(E)} \frac{dz}{\sqrt{1 - z^2 + O(Ez^4)}} \left( \frac{\alpha^2 + 2E\beta z^2}{\alpha + 2E\beta z^2} \right).\end{aligned}$$

Because the integrands are summable functions, by using Lebesgue's dominated convergence theorem [7] we can take the limit inside the integral; the result then follows by first taking the limit and then computing the integral.

We now show that  $T_0(E) \rightarrow 2\pi/\sqrt{\beta}$  as the energy tends to infinity. By putting  $y = z\sqrt{2\beta E}$  we obtain

$$\begin{aligned}\lim_{E \rightarrow \infty} T_0(E) &= \lim_{E \rightarrow \infty} \frac{4}{\sqrt{\beta}} \int_0^{1+O(\frac{\log E}{E})} \left( \frac{\alpha + 2\beta E z^2}{1 + 2\beta E z^2} \right) \frac{dz}{\sqrt{1 - z^2 - \Gamma}} \\ &= \frac{4}{\sqrt{\beta}} \lim_{E \rightarrow \infty} \int_0^1 \frac{dz}{\sqrt{1 - z^2 - \Gamma}} + \frac{4}{\sqrt{\beta}} \lim_{E \rightarrow \infty} \int_1^{1+O(\frac{\log E}{E})} \frac{dz}{i\sqrt{z^2 - \Gamma - 1}},\end{aligned}$$

where  $\beta E \Gamma = (\alpha - 1) \log(1 + 2\beta E z^2)$ . Again, as above, we use Lebesgue's dominated convergence theorem in order to take the limit inside the integrals; we then make the computations and the result follows.

## B Estimates for large dissipation

In this appendix we wish to show by induction that for large  $\gamma$  the coefficients (5.8) satisfy the asymptotics

$$x_\nu^{(k)} \propto (1/\gamma)^k, \quad \nu \neq 0, \quad x_0^{(k)} \propto (1/\gamma)^{k-1}.$$

By using (5.4) we first observe that for  $k = 1$  we obtain  $x_\nu^{(1)} \propto 1/\gamma$  for  $\nu \neq 0$  and  $x_0^{(1)} \propto 1$ . Hence  $y_\nu^{(1)} \propto 1/\gamma$  for  $\nu \neq 0$  and  $y_0^{(1)} = 0$ . Let us define the quantity  $S_\nu = 1 + i\gamma\nu - \nu^2$ ; for large  $\gamma$ ,  $S_\nu$  can be bounded from below  $\propto \gamma$  for any  $\nu \neq 0$ , while  $S_0 = 1$ . Assume now that, for any  $k' < k$ ,  $x_\nu^{(k')} \propto (1/\gamma)^{k'}$  if  $\nu \neq 0$  and  $x_0^{(k')} \propto (1/\gamma)^{k'-1}$ . Then

$$\begin{aligned}x_\nu^{(k)} &= \frac{1}{S_\nu} \sum_{p=0}^k \left\{ - \sum_{\substack{k_1 + \dots + k_p + k_0 = k \\ \nu_1 + \dots + \nu_p + \nu_0 = \nu}} \left( \frac{g^{(p)}(0)}{p!} y_{\nu_1}^{(k_1)} \dots y_{\nu_p}^{(k_p)} x_{\nu_0}^{(k_0)} \right) \right. \\ &\quad \left. + \gamma \frac{g^{(p)}(0)}{p!} y_{\nu_1}^{(k_1)} \dots y_{\nu_p}^{(k_p)} y_{\nu_0}^{(k_0)} \right\} + \sum_{\substack{k_1 + \dots + k_p + 1 = k-1 \\ \nu_1 + \dots + \nu_p + \nu_0 = \nu}} \frac{g^{(p)}(0)}{p!} y_{\nu_1}^{(k_1)} \dots y_{\nu_p}^{(k_p)} f_{\nu_0} \Big\}.\end{aligned}$$

By the inductive hypothesis each  $y_{\nu_i}^{(k_i)}$  is proportional to  $(1/\gamma)^{k_i}$ , while, in general,  $x_{\nu_0}^{(k_0)} \propto (1/\gamma)^{k_0-1}$ , because one can have  $\nu_0 = 0$ . Since  $S_\nu \propto \gamma$  for  $\nu \neq 0$ , then for

$\nu \neq 0$  — aside from some constants involving the coefficients  $g^{(p)}(0)/p!$  and  $f_{\nu_0}$  — we have  $x_\nu^{(k)} \propto (1/\gamma)^k$ . For  $\nu = 0$  the only difference is that  $S_0 = 1$  while the remaining estimates are the same and therefore we obtain  $x_0^{(k)} \propto (1/\gamma)^{k-1}$ .

### Acknowledgments

It is a pleasure to acknowledge fruitful discussions with Alexei Ivanov.

### References

- [1] M.V. Bartuccelli, A. Berretti, J.H.B. Deane, G. Gentile, S. Gourley, *Selection rules for periodic orbits and scaling laws for a driven damped quartic oscillator*, Preprint, 2006.
- [2] M.V. Bartuccelli, J.H.B. Deane, G. Gentile, *Periodic attractors for the varactor equation*, Preprint, 2006.
- [3] M.V. Bartuccelli, J.H.B. Deane, G. Gentile, *Globally and locally attractive solutions for quasi-periodically forced systems*, J. Math. Anal. Appl., in press.
- [4] M.V. Bartuccelli, J.H.B. Deane, G. Gentile, S. Gourley, *Global attraction to the origin in a parametrically driven nonlinear oscillator*, Appl. Math. Comput. **153** (2004), no. 1, 1–11.
- [5] M.V. Bartuccelli, J.H.B. Deane, G. Gentile, L. Marsh, *Invariant sets for the varactor equation*, R. Soc. Lond. Proc. Ser. A Math. Phys. Eng. Sci. **462** (2006), no. 2066, 439–457.
- [6] M.V. Bartuccelli, G. Gentile, K.V. Georgiou, *On the dynamics of a vertically driven damped planar pendulum*, R. Soc. Lond. Proc. Ser. A Math. Phys. Eng. Sci. **457** (2001), no. 2016, 3007–3022.
- [7] A. Browder, *Mathematical Analysis: An Introduction*, Springer-Verlag, New York, 1996.
- [8] S.-N. Chow, J.K. Hale, *Methods of bifurcation theory*, Grundlehren der Mathematischen Wissenschaften 251, Springer-Verlag, New York-Berlin, 1982.
- [9] L.O. Chua, M. Hasler, J. Neirynck, P. Verburgh, *Dynamics of a piecewise-linear resonant circuit*, IEEE Transactions on Circuits and Systems **CAS-29** (1982), no. 8, 535–546.
- [10] J.H.B. Deane, *Modelling the dynamics of nonlinear inductor circuits*, IEEE Transactions on Magnetics **30** (1994), no. 5, 2795–2801.
- [11] G. Gallavotti, G. Gentile, *Hyperbolic low-dimensional invariant tori and summations of divergent series*, Comm. Math. Phys. **227** (2002), no. 3, 421–460.

- [12] G. Gentile, M.V. Bartuccelli, J.H.B. Deane, *Summation of divergent series and Borel summability for strongly dissipative equations with periodic or quasi-periodic forcing terms*, J. Math. Phys. **46** (2005), no. 6, 062704, 21 pp.
- [13] G. Gentile, M.V. Bartuccelli, J.H.B. Deane, *Quasi-periodic attractors, Borel summability and the Bryuno condition for strongly dissipative systems*, J. Math. Phys., in press.
- [14] G. Gentile, M.V. Bartuccelli, J.H.B. Deane, *Bifurcation curves of subharmonic solutions*, Preprint, 2006.
- [15] J. Guckenheimer, Ph. Holmes, *Nonlinear oscillations, dynamical systems, and bifurcations of vector fields*, Applied Mathematical Sciences 42, Springer-Verlag, New York, 1990.
- [16] J.K. Hale, P. Táboas, *Interaction of damping and forcing in a second order equation*, Nonlinear Anal. **2** (1978), no. 1, 77–84.
- [17] N.N. Krasovskii, *Stability of motion. Applications of Lyapunov's second method to differential systems and equations with delay*, Stanford University Press, Stanford, Calif., 1963.
- [18] J.D. Kraus, *Electromagnetics*, McGraw-Hill International Editions, 4th edition, 1991.
- [19] V.K. Mel'nikov, *On the stability of a center for time-periodic perturbations*, Trudy Moskov. Mat. Obšč. **12** (1963), 3–52; translated in Trans. Moscow Math. Soc. **12** (1963), 1–57.
- [20] J.J. Stoker, *Nonlinear Vibrations in Mechanical and Electrical Systems*, Interscience Publishers, Inc., New York, N.Y., 1950.